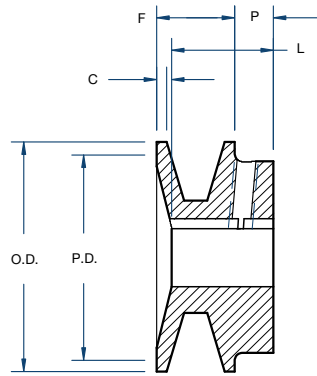
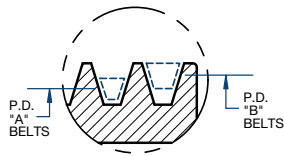


# Sheaves

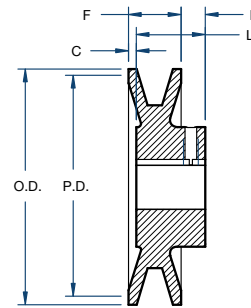
## BK STYLE



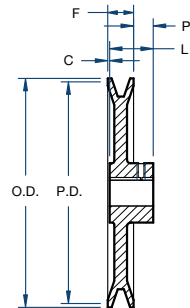
# BLACKSTAR®



Type 1



Type 2



Type 3

Part No.	Diameter (in)			Type	Stock Bores Marked (x) (in)											Dimensions (in)				Approx. Weight (lbs)
	Outside	Pitch 4L/A	Pitch 5L/B		1/2	5/8	3/4	7/8	15/16	1	1-1/8	1-3/16	1-1/4	1-3/8	1-7/16	F	L	P	C	
BK24	2.40	1.80	2.20	1	x	x	x	-	-	-	-	-	-	-	-	13/16	1-1/16	13/32	5/32	0.4
BK25	2.50	1.90	2.30	1	x	x	x	x	-	-	-	-	-	-	-	13/16	1-1/16	13/32	5/32	0.5
BK26	2.60	2.00	2.40	1	x	x	x	x	-	-	-	-	-	-	-	13/16	1-1/16	13/32	5/32	0.6
BK27	2.70	2.10	2.50	2	x	x	x	x	-	-	-	-	-	-	-	13/16	1-1/16	13/32	5/32	0.6
BK28	2.95	2.20	2.60	2	x	x	x	x	-	-	-	-	-	-	-	13/16	1-1/16	13/32	5/32	0.8
BK30	3.15	2.40	2.80	2	x	x	x	x	-	-	-	-	-	-	-	13/16	1-1/16	13/32	5/32	0.8
BK32	3.35	2.60	3.00	2	x	x	x	x	-	-	-	-	-	-	-	13/16	1-1/16	13/32	5/32	0.8
BK34	3.55	2.80	3.20	2	x	x	x	x	-	x	x	-	-	-	-	7/8	1-5/32	13/32	1/8	1.3
BK36	3.75	3.00	3.40	2	x	x	x	x	-	x	x	-	-	-	-	7/8	1-5/32	13/32	1/8	1.5
BK40	3.95	3.20	3.60	2	x	x	x	x	-	x	x	-	-	-	-	7/8	1-5/32	13/32	1/8	1.5
BK45	4.25	3.50	3.90	2	x	x	x	x	-	x	x	-	-	-	-	7/8	1-5/32	13/32	1/8	1.8
BK47	4.45	3.70	4.10	2	x	x	x	x	-	x	x	-	-	-	-	7/8	1-5/32	13/32	1/8	1.9
BK50	4.75	4.00	4.40	3	x	x	x	x	x	x	x	-	-	-	-	7/8	1-5/32	13/32	1/8	2.0
BK52	4.95	4.20	4.60	3	x	x	x	x	-	x	x	-	-	-	-	7/8	1-5/32	13/32	1/8	2.0
BK55	5.25	4.50	4.90	3	x	x	x	x	-	x	x	x	-	-	-	7/8	1-5/32	13/32	1/8	2.2
BK57	5.45	4.70	5.10	3	-	x	x	x	x	x	x	-	-	-	-	7/8	1-5/32	13/32	1/8	2.3
BK60	5.75	5.00	5.40	3	x	x	x	x	-	x	x	x	-	-	-	7/8	1-5/32	13/32	1/8	2.3
BK62	5.95	5.20	5.60	3	x	x	x	x	x	x	x	x	-	-	-	7/8	1-5/32	13/32	1/8	2.4
BK65	6.25	5.50	5.90	3	-	x	x	-	-	x	x	-	-	-	-	7/8	1-5/32	13/32	1/8	2.7
BK67	6.45	5.70	6.10	3	-	x	x	-	-	x	x	-	-	-	-	7/8	1-5/32	13/32	1/8	2.8
BK70	6.75	6.00	6.40	3	-	x	x	-	x	x	x	x	-	-	x	7/8	1-15/32	21/32*	1/16*	3.3
BK72	6.95	6.20	6.60	3	-	-	x	-	-	x	x	-	-	x	-	7/8	1-15/32	21/32	1/16	3.9
BK75	7.25	6.50	6.90	3	-	-	x	-	-	x	x	-	-	x	-	7/8	1-15/32	21/32	1/16	3.9
BK77	7.45	6.70	7.10	3	-	-	x	-	-	x	x	-	-	x	-	7/8	1-15/32	21/32	1/16	4.1
BK80	7.75	7.00	7.40	3	-	x	x	x	-	x	x	x	x	x	x	7/8	1-15/32	21/32	1/16	4.4
BK85	8.25	7.50	7.90	3	-	-	x	-	-	x	x	-	-	x	x	7/8	1-15/32	21/32	1/16	5.0
BK90	8.75	8.00	8.40	3	-	-	x	x	x	x	x	x	-	-	x	7/8	1-15/32	21/32	1/16	5.0
BK95	9.25	8.50	8.90	3	-	-	x	-	-	x	x	-	-	x	x	7/8	1-15/32	21/32	1/16	5.4
BK100	9.75	9.00	9.40	3	-	-	x	x	x	x	x	x	x	x	x	7/8	1-15/32	21/32	1/16	5.6
BK105	10.25	9.50	9.90	3	-	-	-	-	-	x	-	-	-	x	x	7/8	1-15/32	21/32	1/16	5.8
BK110	10.75	10.00	10.40	3	-	-	x	-	-	x	x	x	-	x	x	7/8	1-15/32	21/32	1/16	6.4
BK115	11.25	10.50	10.90	3	-	-	-	-	-	x	-	-	-	x	x	7/8	1-15/32	21/32	1/16	6.9
BK120	11.75	11.00	11.40	3	-	-	x	-	-	x	-	-	-	x	x	7/8	1-15/32	21/32	1/16	7.4
BK130	12.75	12.00	12.40	3	-	-	x	-	-	x	x	x	-	-	x	7/8	1-15/32	21/32	1/16	8.4
BK140	13.75	13.00	13.40	3	-	-	x	-	-	x	-	-	-	-	x	7/8	1-15/32	21/32	1/16	9.4
BK160	15.75	15.00	15.40	3	-	-	-	-	-	x	x	x	x	-	-	7/8	1-15/32	21/32	1/16	11.4
BK190	18.75	18.00	18.40	3	-	-	-	-	-	x	-	-	-	-	-	7/8	1-15/32	21/32	1/16	13.4

\*P= 13/32" and C= 1/8" for 1" bore and smaller.